

Instruction Manual

1. Delivery:

- **Art.No. 2.022: FV6-Central**
 - 1 INNO-Flex base with 6 Flex-pipe connections 75
 - 1 INNO-Flex connection DN 180 with reduction to DN 150
- **Art.No. 2.023: FV12-Flat**
 - 2 INNO-Flex base with 6 Flex-pipe connections 75
 - 1 INNO-Flex connection DN 180 with reduction to DN 150
- **Art.No. 2.024: FV12-Central**
 - 2 INNO-Flex base with 6 Flex-pipe connections 75
 - 2 INNO-Flex connection DN 180 with reduction to DN 150
- **Art.No. 2.025: FV18-Flat**
 - 3 Inno-Flex base with 6 Flex-pipe connections 75
 - 1 INNO-Flex connection DN 180 with reduction to DN 150
- **Art.No. 2.026: FV18-Central**
 - 3 Inno-Flex base with 6 Flex-pipe connections 75
 - 3 Inno-Flex connection DN 180 with reduction to DN 150
- A recent installation, operation and maintenance manual

2.1 Field of application and use:

The INNO-Flex-distribution system was developed specifically for the connection of pipes and ISODuct INNO-Flex hose and used for the controlled ventilation of buildings, flats, etc.

2.2 Improper operation:

- Use fat-containing waste air, explosive gases, dust-laden air or adhesive aerosols
- Outdoor installation
- Connection of cooker hoods to the ventilation system

2.3 Safety hints:

- Always follow the safety rules on this line. Failure to comply can result in personal injury or damage to the device.
- Keep these instructions should be in the vicinity of the device.
- Put the distribution system only in accordance with the above-described purpose.
- Let yourself introduce into the system after the installation from your installer.
- Installation and repair work must be carried out only by authorized specialist personnel.
- Place the plant out of service immediately if you notice any damage or defects are a risk to persons or property. Further use should be avoided until full restoration!
- Make sure the distributor only grown with all the connecting pipes.
- The distributor must only be operated under the framework of the systems planning of the calculations.

2.4 Warranty and Product Liability:

For each delivery are subject to our "Terms and Conditions" in its current version. The distributor has a 2-year manufacturer's warranty from commissioning, starting no later than two months from delivery date (delivery INNO-Products GmbH to the installer). The warranty is limited to the pure material replacement and does not include the service.

The guarantee applies only on proof of an executed operation and regular maintenance performed in accordance with our rules, by one of our authorized installer. Warranty claims can be material or construction made errors of law only.

If you have any complaints, the unit may not be removed without our written consent.

A warranty on parts will be granted only if these were supplied by us and installed by an authorized installer.

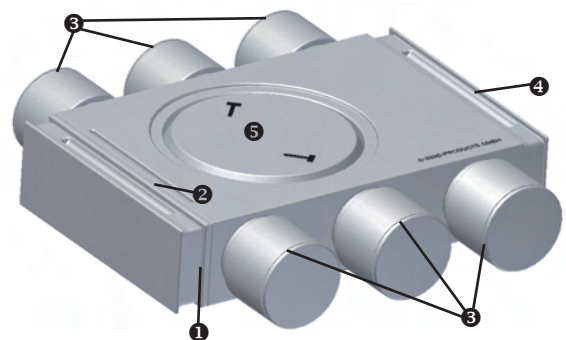
The warranty is void:

- (a) if the device is operated during the construction phase and is very dirty.
- (b) if no original spare parts.
- (c) if unauthorized changes are made to the plant.
- (d) if the device is exposed to aggressive substances.
- (e) if the device is operated with aggressive air.
- (f) automatically after a period of 2 years.

Further on, the company INNO-Products not liable for damages that are attributable to:

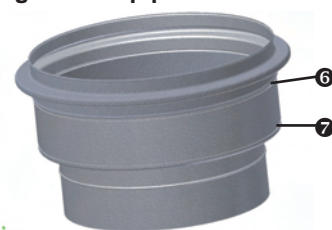
- (g) failure to follow safety, operating and maintenance requirements of this technical documentation.
- (h) the use of non-INNO Products geliefert materials. The responsibility lies solely with the installing operation..
- (i) normal wear and tear.

3.1 Cutting and broken edges on the body:



- ❶ Cutting edge revision cover
- ❷ Cutting edge slot base
- ❸ Cutting edge INNO-flex pipe connection
- ❹ Cutting edge content, body
- ❺ Drive-in cover for pipe connection

3.2 Cutting edge on the pipe socket:



- ❻ Cutting edge as connectors for central distribution
- ❼ Cutting edge for ISODuct pipe DN 180

Instruction Manual

4. Connecting the pipe stub on INNO-Flex-Distributor:



Fold in the cover ⑤ with a medium-strong hammer hit



Remove the broken lid ⑤

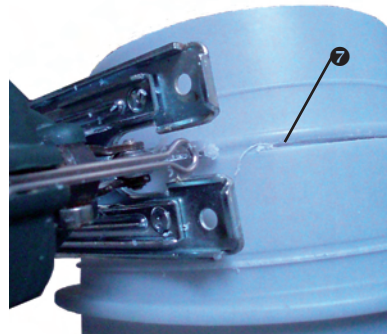


Place the connecting pieces in the free opening until it clicks into place.

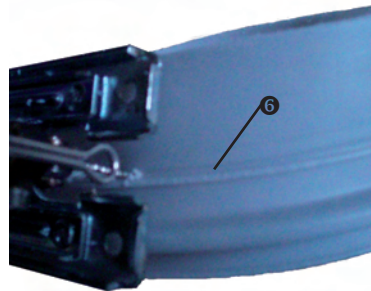
Note: Cut the pipe before the desired length: DN 180 or connectors! (See point 5)

Note: The plug-in edge is provided before the final connection to a peripheral Silikonwulst to ensure air tightness in accordance with german DIN EN 1610..

5. Shortening of the connector housing:



Shorten a connecting pipe-to-edge ⑦ to establish a pipe connection for ISO-Duct DN 180.

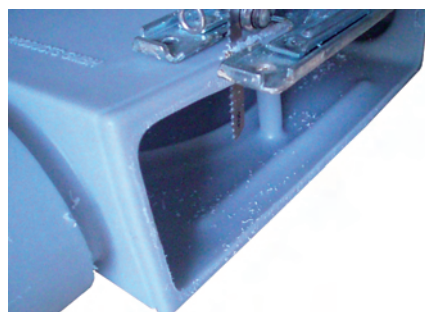


Cut the connection pipe to edge ⑥ to produce a connector for central distribution.

6. Preparing a revision of opening:



Disconnect the inspection cover on the edge of ① with a jigsaw cleanly. The sawed-off part is the revision cover dar.



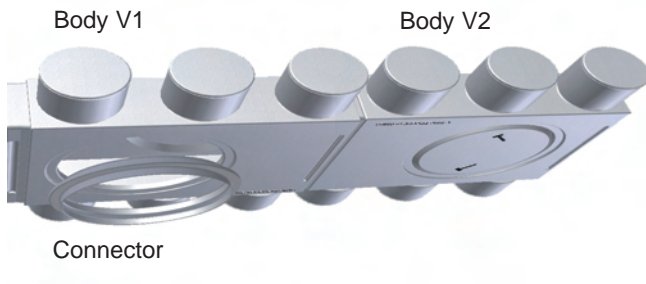
Disconnect the adapter to edge from ② in the same way. The cut piece is waste and is no longer used.

Instruction Manual



Remove any burrs with sandpaper.

6. Producing a Flat-/Etagen-Distributor with 12 or 18 INNO-Flex-pipe connections:



a) Open the main body V1 at the cutting edge ① and ②, as described under 6.



b) Open the body at the cutting edge of V2 ④.

The two main body V1 and V2 can now slide into each other.

method of producing a Flat-/Etagen-Distributor with 18 ports, analog to the aforementioned steps.

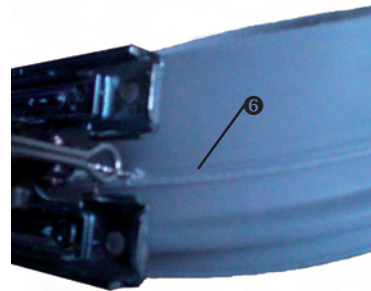
A production of distributors with more than 18 ports is not recommended, since the required air flow can not be guaranteed.

Note: The plug-in edge is provided before the final connection to a peripheral Silikonwulst to ensure air tightness in accordance with german DIN EN 1610.

7. Manufacture of central distribution with 12 or 18 INNO-Flex-pipe connections:



Flip the lid ⑤ with a medium-strong hammer hit each on the bottom and the top of the connected body, as described under 4.



Shorten a connecting pipe-to-edge ⑦ to create a connector for central distribution.



Plug the connecting pieces in a main body and the second Body to this connection.

Note: The plug-in edge is provided before the final connection to a peripheral Silikonwulst to ensure air tightness in accordance with german DIN EN 1610.

method for producing a central manifold with 18 ports, analog to the aforementioned steps.

A production of distributors with more than 18 ports is not recommended, since the required air flow can not be guaranteed.

For the production of through distributors refer to the page where you want to take the pipe on the lid ⑤ and install an additional connecting pieces.

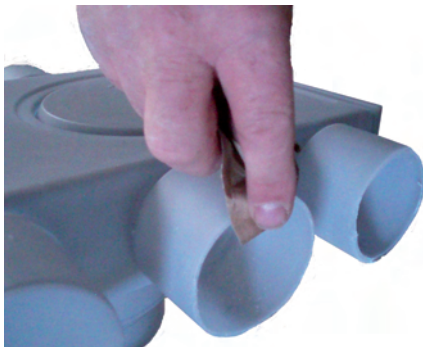
Instruction Manual

8. Opening the ports for INNO-Flex hose DN 75:

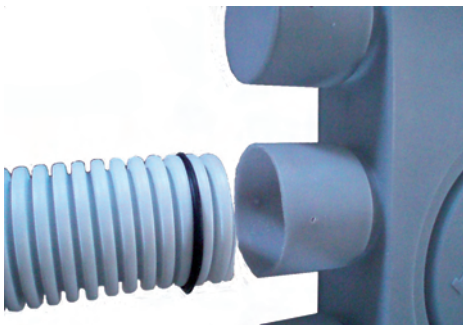


Open to any distribution base, the terminal port ⑧ in the required number.

Note: 1 piece is perforated for production reasons, these must always be connected with, or hermetically sealed.



Remove any burrs with sandpaper.



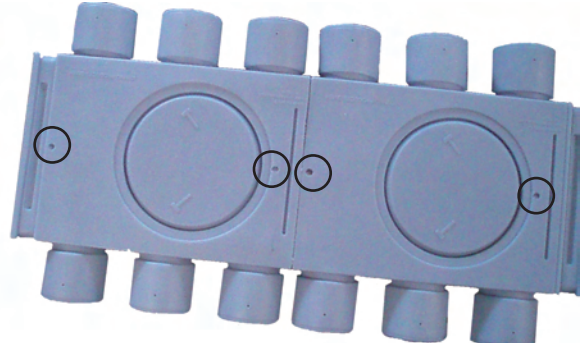
Slide the INNO-Flex hose DN75 with the prescribed and properly fitted for poetry in the open socket connection to this is fixed.

When embedding of the manifold, the hose connections are fixed in position using cold shrinking tape.

Do the same for all other connections.

When using INNO-Flex hose DN 63, use the reductions RED75/63 (Art.No. 2.015) with the respective seals DN 75 and DN 63.

9. Mounting of the distributor:



The distributor can be attached to the ceiling with floor screws M8, which is 2 passes provided to the left and right of the distributors.

Note: When moving the pipe connections with central distribution, such as by turning the second Manifold at 180° were present, not more about each other passages. The attachment of the lower manifold is then punched tape or similar means produce.



If you have any problems with your ventilation system, you should first contact to the specialist installer who has made the installation of the system. If not you, then please do not hesitate even to us:

INNO-Products GmbH Deutschland

Dorfgütingen 52
DE-91555 Feuchtwangen

INNO-Products GmbH Switzerland

Münchensteinerstr.43
CH-4052 Basel

fon: +49 (0) 98 52 - 61 38 - 08
fax: +49 (0) 98 52 - 61 38 - 10

mail: post@inno-products.de
www.inno-products.de

This product is in its type, design and functionality for utility model protection (Nr. 20 2006 013 503 0).