



TANNER[®]
Windows and Doors





Under the glow of a full moon, deep in the Black Forest, our story begins...

That's when the craftspeople originally set out to harvest wood for their windows. Through the generations, it was known that wood gathered in the shine of a full moon was at its most durable. At the same time, the effect of harvesting it was at its minimum.

It's this loving spirit for wood and sustainability that continues to live in all of our hand-crafted Tanner Windows and Doors: patient, old-world precision fused with today's cutting edge German engineering.

The result is the most beautiful, high-performance windows and doors the world has ever seen.

Introducing our family of TANNER Windows and Doors®:

Handcrafted performance. Unparalleled comfort.

Our windows and doors are still handcrafted one by one, they are offered in a variety of shapes, sizes and finishes to accommodate your most creative designs and your most discerning customers.

The result is the most beautiful, high-performance windows and doors the world has ever seen. The comfort provided by these windows' revolutionary technology is unparalleled. A new level of efficiency offers indoor air comfort and the perfect amount of warmth, winter and through summer. These windows and doors are as beautiful in their use of technology as they are in their design.

Your vision. Our passion. A perfect fit.



Vitra Window™

The window of the future is here: Vitra-Premium is the leading product for the next generation of ecological and ultimate performance windows. It combines ultimate quality and performance with an elegant aesthetic.



Lauda Window™

The Lauda - named after the old German word for metal - in our aluminum clad wood window (and door) line, available in Standard or Premium options.



Holta Window™

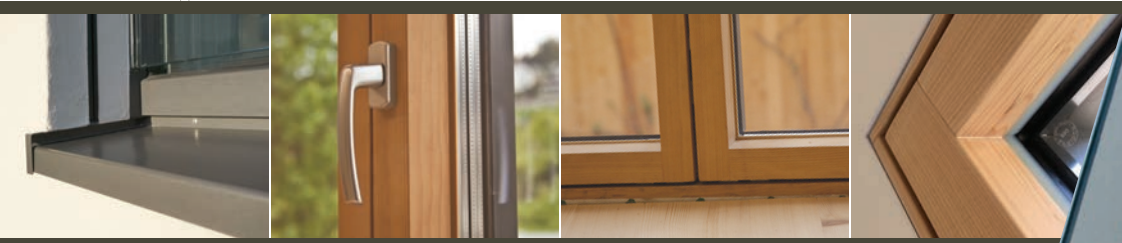
Holta – named after the old German word for wood – is our most economical wood window and door line, available in Standard or Premium options.



Brooklyn DH Window™

The Tanner Window and Door team developed the Brooklyn 'Double-Hung' window to meet the needs of New York City's stringent Landmark historical requirements for the restorations of the Big Apple's beloved Brooklyn Brownstones.





Vitra Window[™]

The window of the future is here: **Vitra-Premium** is the leading product for the next generation of ecological and ultimate performance windows. It combines ultimate quality and performance with an elegant aesthetic.

A fully integrated sash into the window frame results in a truly modern look. From the exterior it appears frameless with mostly glazing exposure. With the integrated invisible hinge hardware, its flush, elegant interior look leaves it almost indistinguishable from an operable sash and a fixed glass.

The **Vitra-Premium** window system can be used for single and double French patio doors. It has an additional 3+1 seal for a total of 4 for superior air and water tightness and multi-locking hidden Tilt & Turn hardware. It incorporates a partially insulated frame and optimized cladding to mitigate thermal bridging, which are design features that meet the German Passive House Standard. Its secondary water drainage design showcases the quality of its European engineering.



photo by Jeff Amram





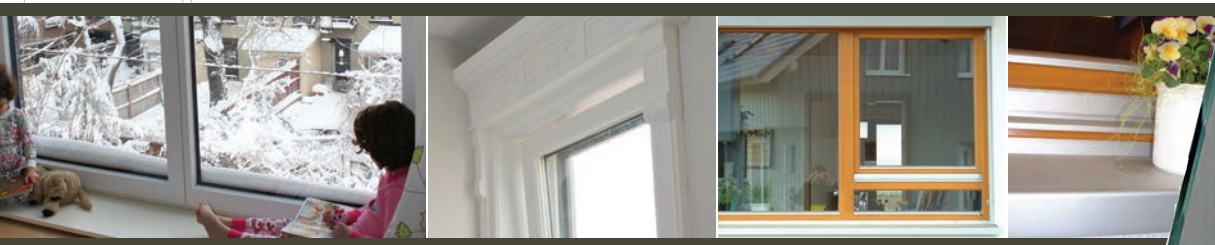
Lauda WindowTM

The **Lauda** - named after the old German word for metal - in our aluminum clad wood window (and door) line, available in Standard or Premium options. The Lauda is made from the same highest quality European fir or spruce as are all Tanner windows and doors. It has three seals for superior air and water tightness and multi-locking Tilt & Turn hardware. The Lauda window system can be used for single and double French patio doors, as well as up to seven sections of folding patio door.

The **Lauda-Premium** has a wider frame profile maximizing its overall performance values. It also incorporates a partially insulated frame and optimized cladding to mitigate thermal bridging. Lauda-Premium's secondary water drainage design showcases the quality of its European engineering. These design features meet the acclaimed German Passive House Standard.







Holta Window™

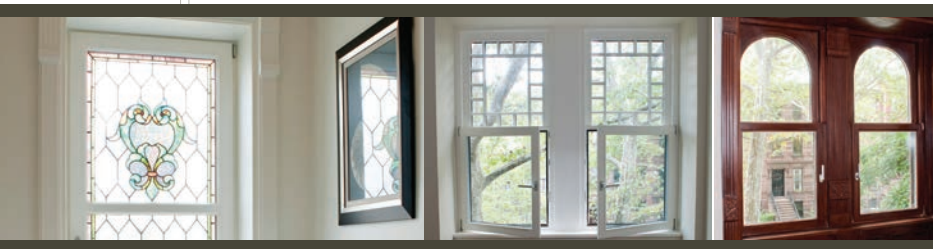
Holta – named after the old German word for wood – is our most economical wood window and door line, available in Standard or Premium options. The Holta is made from the same highest quality European fir or spruce as are all Tanner windows and doors. It has three seals for superior air and water tightness, and multi-locking Tilt & Turn hardware. The Holta window system can be used for single and double French patio doors as well as up to seven sections of folding patio door.

Wood windows do require regular painting on the exterior. To mitigate this at the most exposed surfaces, we add aluminum flashing on top of all the horizontal window sash and frame parts.

The Holta-Premium adds a wider frame profile to improve its overall performance values. It incorporates a partially insulated frame and optimized cladding to mitigate thermal bridging. Its secondary water drainage design showcases the quality of its European engineering. These special design features meet the acclaimed German Passive House Standard.







Brooklyn Double Hung Windows™

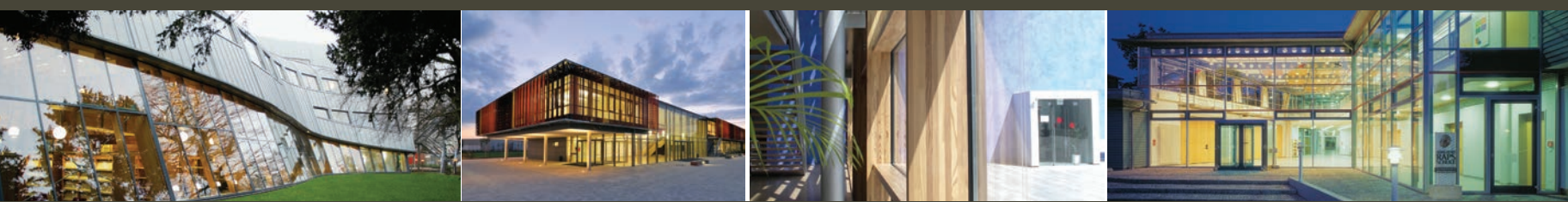
Tanner and team developed the Brooklyn 'Double-Hung' window to meet the needs of New York City's stringent Landmark historical requirements for the restorations of the Big Apple's beloved Brooklyn Brownstones... From a round top to stained glass, mullion and very specific historical dimensions, nothing stops our craftsmen from producing the highest quality window to last for generations to come.

This fixed upper and operable lower window sash have the double hung look, but function like all the other Tilt & Turn Tanner windows. These wood windows are made from European fir, spruce or Meranti wood depending on the exterior color desired.

Brooklyn-Premium adds a wider frame along with a flush interior and hidden hinges to complete the historical esthetic in the interior. It adds a third seal and accommodates a wider range of glass options to provide ultimate comfort and performance.





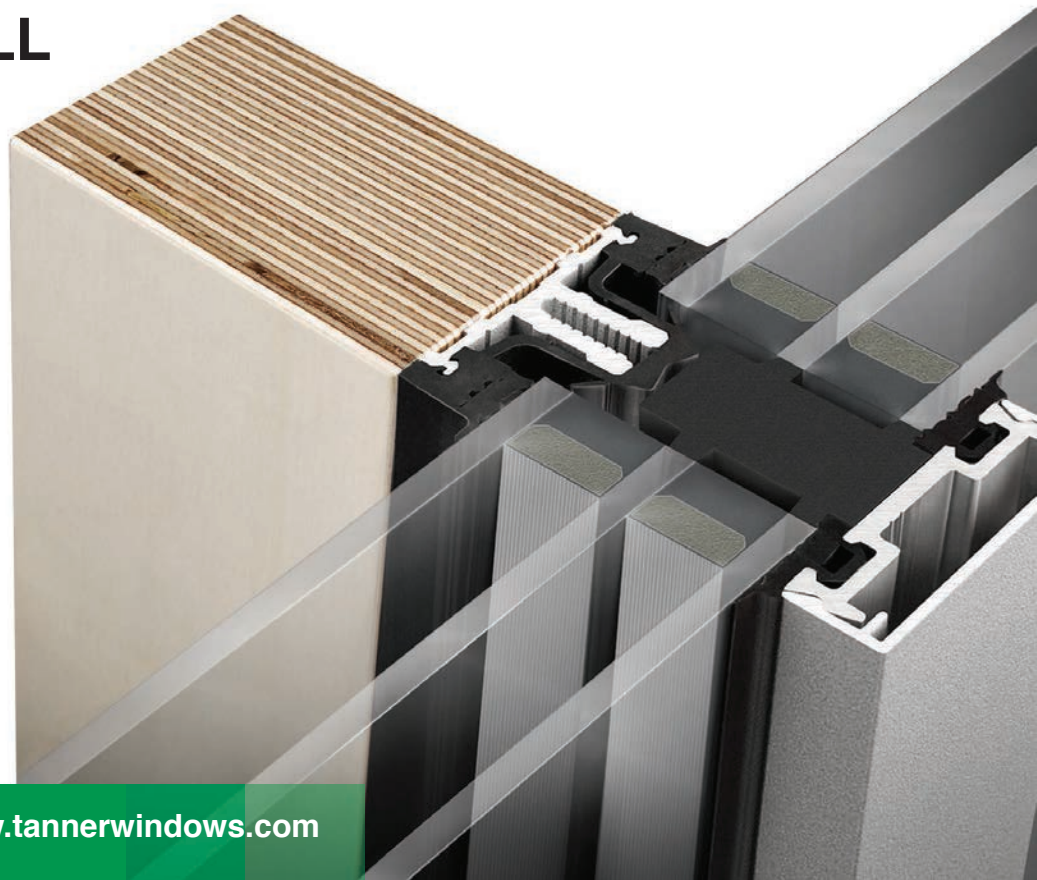


RAICO® CURTAIN WALL

RAICO is the first curtain wall system vendor in the world to offer Passive House certified curtain walls made of wood, steel and aluminum – setting the benchmark in the industry.

RAICO pursued the goal of climate protection within their entire manufacturing methods by using building components and materials that have been selected according to the principles of sustainability and recyclability.

Highly efficient transmission values meeting the German Passive House-Standard $U_w = 0.125 \text{ Btu/hft}^2\text{F} / R-8.0$ (including thermal bridging of all connectors). It features an integrated drainage system in continuous gasket in three levels.





TANNER

Patio Doors

French Doors, Folding Doors

These patio doors are part of the window system families and can be made as 'Holta', 'Lauda' or 'Vitra'. For max and min dimensions – please ask! As a custom shop we like to push the boundaries of possibilities. Anything we deem technically feasible we will be happy to manufacture.

French doors are typically made with the Tilt & Turn window hardware, but with a doorsill rather than a windowsill, and operate accordingly. They come as single or double sash. We can also make them entry doors by adding a lock and handle on the exterior along with a wider sash frame.

The folding patio doors can be made up to seven sections or panels wide.

Lift + Slide Door

The Lift & Slide patio doors offer the ability to move a large segment to one side or another. And the size? Our Lift & Slide Door system can be customized up to about 9x11 feet on the operable part, with the fixed glass area up to 16 feet. They can be configured as single, double or triple sash in one wall or over a corner





photo by Jeff Amram Photography

Entry Doors

For entry doors we typically use the frame from the respective window system combined with three choices of door systems. The same standard hardware and sill systems are used for all, with alternate options. Typically the exterior of the doors are painted wood, but can be aluminum clad.

Holta Entry Door is a 78mm flat solid insulated slab or with a semi or full lite. **Lauda-Premium Entry Door** is a 98mm flat solid insulated slab or with a semi or full lite that meets the German Passive House Standard. If the highest possible R-value is desired, this door can be insulated using vacuum insulation panels = Up to R-50 performance!

Custom Entry Door If you desire a custom entry door, we have the technical expertise to manufacture almost anything your heart desires. However wild your requests, we are up to the challenge of bringing you the ultimate windows and doors.





An abundance of appearance.

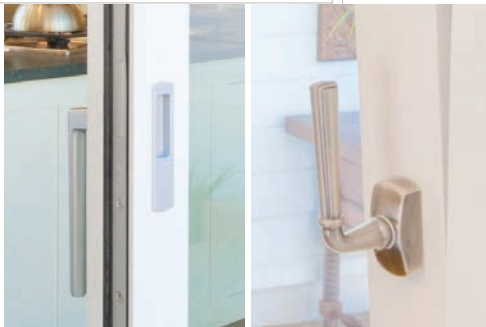


Appearance

Choose from a variety of wood species, with natural, oiled, stained, painted wood finishes, or exterior aluminum cladding.

Hardware and More . . .

Handles and knobs are produced in aluminum, stainless steel or any other plating system requested. Various locking and security systems are also available.

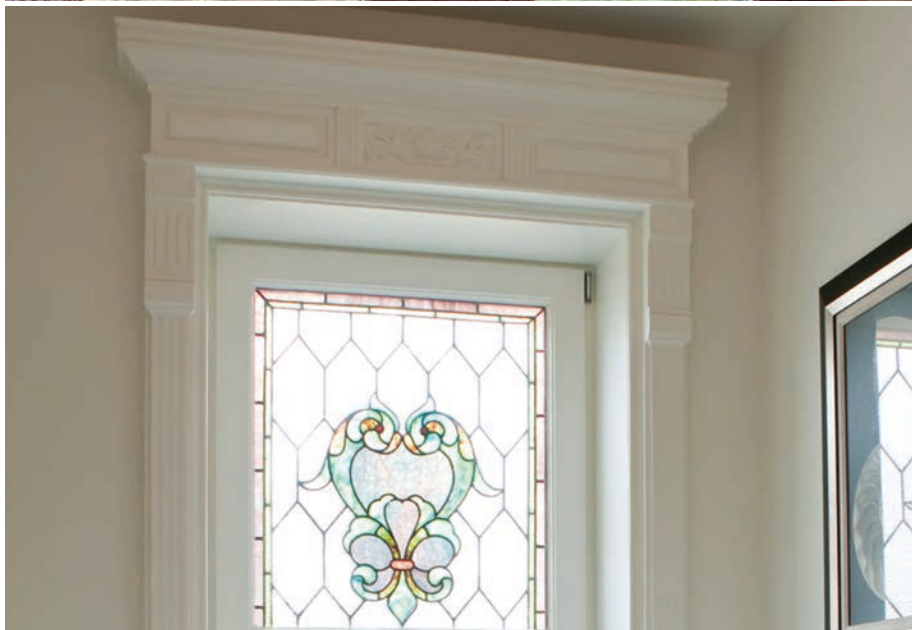


Dimensions/Design

All Tanner Windows and doors are custom built. From round to square, to triangular windows, the options are endless.



photos by Adam Bell Photography

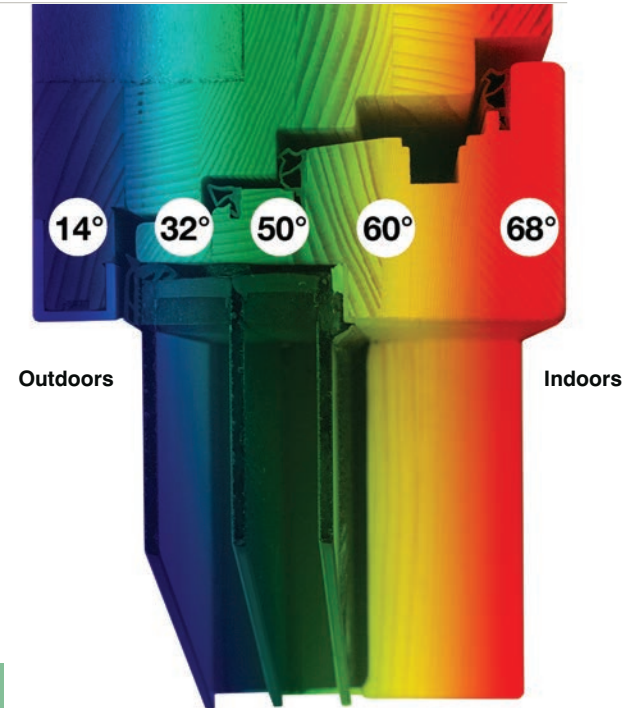


The performance behind our passion.

Uncompromising craftsmanship featuring air-tightness with triple seals. A commitment to the highest German engineering standards. They all merge in the most innovative, high-performance windows and doors in the world: only from Tanner Windows and Doors.

Structural Values

TANNER Windows	Overall U-value*	Frame U-value*	Glass U-value*	Glass SHGC*
	R-value	R-value	R-value	
Vitra Premium	U-0.113 R-8.9	U-0.136 R-7.4	U-0.098 R-10.7	0.52
Lauda Premium	U-0.118 R-8.5	U-0.143 R-7.0	U-0.098 R-10.7	0.52
Lauda	U-0.136 R-7.4	U-0.212 R-4.9	U-0.098 R-10.7	0.52
Holta Premium	U-0.116 R-8.6	U-0.137 R-7.2	U-0.098 R-10.7	0.52
Holta	U-0.126 R-8.0	U-0.173 R-5.8	U-0.098 R-10.7	0.52
Brooklyn Premium	U-0.126 R-8.0	U-0.173 R-5.8	U-0.098 R-10.7	0.52
Brooklyn	U-0.148 R-6.7	U-0.211 R-4.7	U-0.098 R-10.7	0.52
Raico Curtain Wall 56mm	U-0.125 R-8.0	U-0.160 R-6.2	U-0.098 R-10.7	0.52
Raico Curtain Wall 76mm	U-0.123 R-8.1	U-0.157 R-6.4	U-0.098 R-10.7	0.52 -
Other Glass Options	Call your Tanner Windows and Doors Rep.			
Holta Entry Door	U-0.176 R-5.7			
Lauda Premium Entry Door	U-0.127 R- 7.8	* U/R - Values based on ISO Standards		
Lauda Premium Entry Door with VIPs	U-0.026 R-50			





The performance behind our passion.

A commitment to the highest German engineering standards. Uncompromising craftsmanship featured in the Lauda Window.

The frame made of European fir or spruce - can be left exposed and oiled, stained or painted

Choice of aluminum cladding increases durability

Triple glazing with ACSplus warm-edge spacer is filled with argon or krypton

TANNER
Windows and Doors

Multi point locking tilt and turn hardware helps weatherstripping to limit air infiltration

Triple weather stripping

Two water drainage layers

A core of cork or wood fiber insulation to increase thermal performance







www.tannerwindows.com

“Engineered and Built in Europe for the Finest Architecture in America.”

“As a U.S. architect involved in global sustainable design for more than 30 years, I’m passionate about creating beautiful, ultimately energy efficient buildings. To bring my visions to life, I’ve had to seek out the highest-performing products from around the world.

My partner Klaus Müller and his team in Germany link us to the ultimate quality European made products. I found Klaus in 2004 while searching in Germany for an expert to build the windows and doors for my design of the first certified Passive House in North America – das BioHaus at Concordia Colleges Language Villages. After building the BioHaus, Klaus and I knew we had to share this exciting new window and door technology with U.S. customers. We knew that you too would love this amazing experience of designing with, building with and living in the highest level of comfort, beauty and performance in the world.

Soon after, we achieved another notable first when we designed a double hung lookalike window for a Brooklyn brownstone in a landmark designated area of New York City. Our ‘Brooklyn’ window seamlessly integrated top-of-the-line European engineering into a historical preservation project, proving that our windows can work with any architectural aesthetic.

My family wanted to be involved in the mission to bring the world’s best windows and doors to North America. Here in North America my son Robert leads sales and marketing and my son Seth serves as our technical expert, handling installation as the leader of the Tanner Construction team.

We believe there can be no compromise between aesthetics and performance, so our windows and doors are as intelligently crafted as they are beautiful, inside and out. That’s why I’ve helped bring this extraordinary vision to North America and why I’m excited to share the possibilities of Tanner Windows and Doors with you for your next projects.

With my commitment to beautiful, comfortable, and uncompromisingly sustainable design, I will help you create your finest--with Tanner Windows and Doors.”



Stephan Tanner, AIA
Principal, Tanner Windows & Doors

Available exclusively through Tanner Windows & Doors

Tanner Windows & Doors

p: 651-925-0866

e: info@tannerwindows.com

301 White Street SW
Minneapolis-Watertown,
MN 55388, USA



www.tannerwindows.com

www.tannerwindows.com